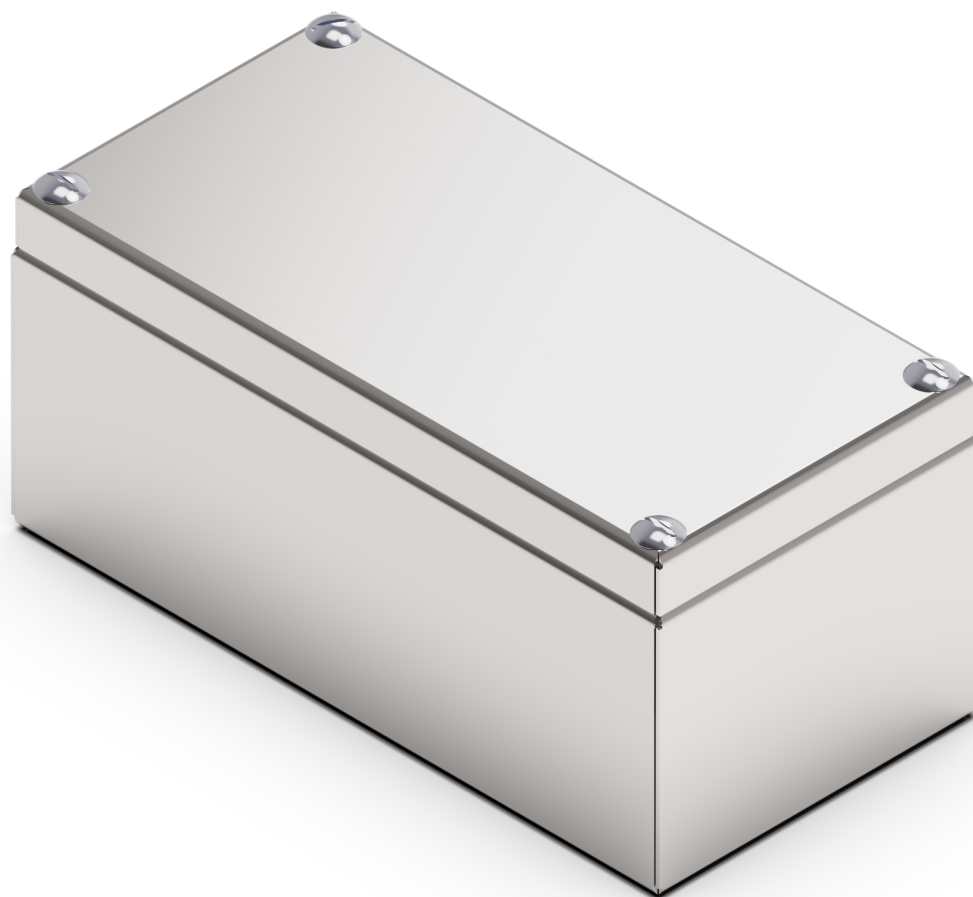


PRODUCT DESCRIPTION



SCA01501509

JUNCTION BOX

*representative image

TECHNICAL CHARACTERISTICS

PRODUCT CODE	SCA01501509	
DESCRIPTION	JUNCTION BOX B150 X H150 X P90	
MATERIAL	STAINLESS STEEL AISI 304 (1.4301)	
MATERIAL FINISHING	SCOTCH BRITE	
IP PROTECTION GRADE (EN 60529)	IP66 / IP69K	
IK RATING (EN 62262)	IK08	
NEMA RATING 250	4X	
UL/CSA UL508A CERTIFICATION, CSA C22.2 n° 14-13	NEMA 1.12.4.4X	
DIMENSIONS	WIDTH mm	150
	HEIGHT mm	150
	DEPTH mm	90
BODY	THICKNESS mm	1.2
	SINGLE-BODY CONSTRUCTION BENT AND CONTINUOUSLY WELDED	
DOOR	THICKNESS mm	1.2
	POLYURETHANE GASKET (RANGE TEMPERATURE: -40°C + 90°C)	
NUMBER OF LOCKS	4	
NUMBER OF REAR FIXING	4	
FIXING INSERT	BLIND THREADED M6	
REAR FIXING DISTANCE	WIDTH mm	110
	HEIGHT mm	110
SUPPLY KIT	INTERNAL PLATE FIXING SCREWS KIT	
PACKAGING	CARDBOARD	
WEIGHT (PLATE EXCLUDED)	Kg	1.5
VOLUME	m ³	0.02

(OPTIONAL) INTERNAL PLATE	PLATE CODE	SPE015015
	MATERIAL	GALVANIZED STEEL
	WIDTH mm	97
	HEIGHT mm	120
	ENCUMBRANCE mm	2
	THICKNESS mm	2
	WEIGHT Kg	0.3

POWER DISSIPATION TABLES

POWER DISSIPATION



MAXIMUM DISSIPABLE POWER IN WATT (W) FOR ALLOWED OVERTEMPERATURE (T °) VALUES (EXTERNAL TEMP. + OVERTEMPERATURE = 60 ° C)

			REAR RAGAINST WALL			
			OVERTEMPERATURE VALUES (dT)			
W	H	D	25°C	30°C	35°C	40°C
mm	mm	mm	W	W	W	W
150	150	90	8	9	11	13

POWER DISSIPATION



MAXIMUM DISSIPABLE POWER IN WATT (W) FOR ALLOWED OVERTEMPERATURE (T °) VALUES (EXTERNAL TEMP. + OVERTEMPERATURE = 60 ° C)

			ALL SIDES FREE			
			OVERTEMPERATURE VALUES (dT)			
W	H	D	25°C	30°C	35°C	40°C
mm	mm	mm	W	W	W	W
150	150	90	8	9	11	12

download link CAD drawing: <https://www.compex.it/download/>